



BINAMON

PLANET A-LGC-Z1



INTRODUCTION

During the times of Genesis, after a huge explosion, limited amounts of BMON have been spread around the universe.

BMON, as the divine particle it is, is necessary for Binamon's birth.

Nowadays we have registered big amounts of BMON that have impacted the A-LGC-Z1 planet.

BMON, after interacting with the planet for a million years, has muted into a new mineral, called Z1-BEP by the scientists.



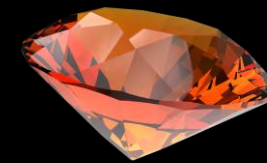
Z1-BEP

Z1-BEP has impressed our scientists and because of its discovery we could unveil one of the biggest mysteries of Binamon's Metaverse: the reason why other life forms of Binamons.

Z1-BEP has triggered the creation of new Binamons variants, wilder than the original ones.

The creatures had adopted wilder aspects in A-LGC-Z1 planet because this planet is more inhospitale.

This gives us the guideline that a new generation of Binamons digital monsters will be able to live on the planet A-LGC-Z1.





THE PROBLEM

At the time of writing this Deck, 180,000 Binamon NFT Collections have been generated, have burned 46M of BMON, with a current circulating of only 95M, in just 1 month of launch.

With the launch of the Play to Earn game (during the month of August 2021), we expect an avalanche of players from all over the world, around 3M to 10M players.

But what is the problem? To generate 200,000 new Binamon NFT Monsters, at the current price of 1200 BMON / Booster, we will need to burn: 80M of BMON!!! Keep in mind that we have a circulating supply of 95M right now!

So we can say that the maximum amount of Players we can attract is 500,000 players! And all will be of great purchasing power, since the Binamon NFT Collection will be extremely wanted and expensive.



THE SOLUTION

Keep in mind that within the Binamon Team, we have a team of economists, mathematicians and physicists; together with the partnership of one of the most important game concept creation companies in the world: Koncepted (working with titles like Warcraft).

That already said, the solution to meet the demand of millions new players is the creation of a Galactic Federation.

In Planet A-LGC-Z1 case, it will have its own currency Z1-BEP (which will be a BEP-20 token with limited supply), with the same Tokenomics as BMON, that is, it will be highly deflationary.

This currency will have a pair against BMON, which at the same time is trading against BNB on Pancakeswap and at the same time trading with USDT on the CEXs that are listed to us.

The Play to Earn players will work for this currency, the workers will mine the Z1-BEP.



THE ELITE

Planet A-LGC-Z1 will have its own currency, its own governance, its own symbol, and its own collection of creatures.

An IDO will be made in BMON to raise the initial funds to create the Z1-BEP Liquidity pool against BMON.

There will be no contribution limit per address. You can contribute all the BMON you want.

The owners of the 2 accounts that contribute the most to the creation of the planet will be proclaimed:

PRESIDENT AND VICE-PRESIDENT

FROM PLANET A-LGC-Z1



PRESIDENT AND VICE-PRESIDENT

The president and vice president will be rewarded with:

President: 10% of total supply

Vice President: 5% of total supply

They will have it with a 6-month vesting (team finance), in addition to the own tokens they buy during the IDO.

The President and Vice President will be responsible to the Binamon Planetary Federation for the good Economic and Social health of their planet.

They will decide with the Governance token Z1-BEP the economic policies, taxes and working hours for the miners.

The success of the planet will be closely watched by the Binamon Planetary Federation.

Likewise, both the President and the Vice President will have 2 positions in the Binamon Planetary Federation.



CUSTOMIZATION OF THE PLANET

The President and Vice-President will decide:

The name of the planet A-LGC-Z!

The name of the coin Z1-BEP.

The symbol.

The planetary logo.

In case they do not coincide between them, they may ask the Federation for their vote, to say in case of a tie of 1 to 1, there will be 3 votes that will define the decisions (only in case they do not agree on their own)

The President and Vice-President may apply tax rates to their workers, which will be used at their discretion to grow their global economy.

The Binamon Planetary Federation will provide all the technological, marketing and influence tools to make the Planet a success.



TECNOLOGY



Planet A-LGC-Z1 will have their own Creature Booster (and their own collection with their ERC-721 token), which will be purchased only with the Z1-BEP coin (and a small amount of BMON), and will be listed in the nft.binamon.org home page.

We estimate a growth equal to that of Binamon of the planet A-LGC-Z1



PLAY TO EARN

The miners who buy the creatures of the planet, will be able to play play to earn, and mine the Z1-BEP.

The planet will have all the Binamon technology.

Each planet will have unique artifacts and items that can only be obtained with the Z1-BEP coin and will be used anywhere in the Federation.

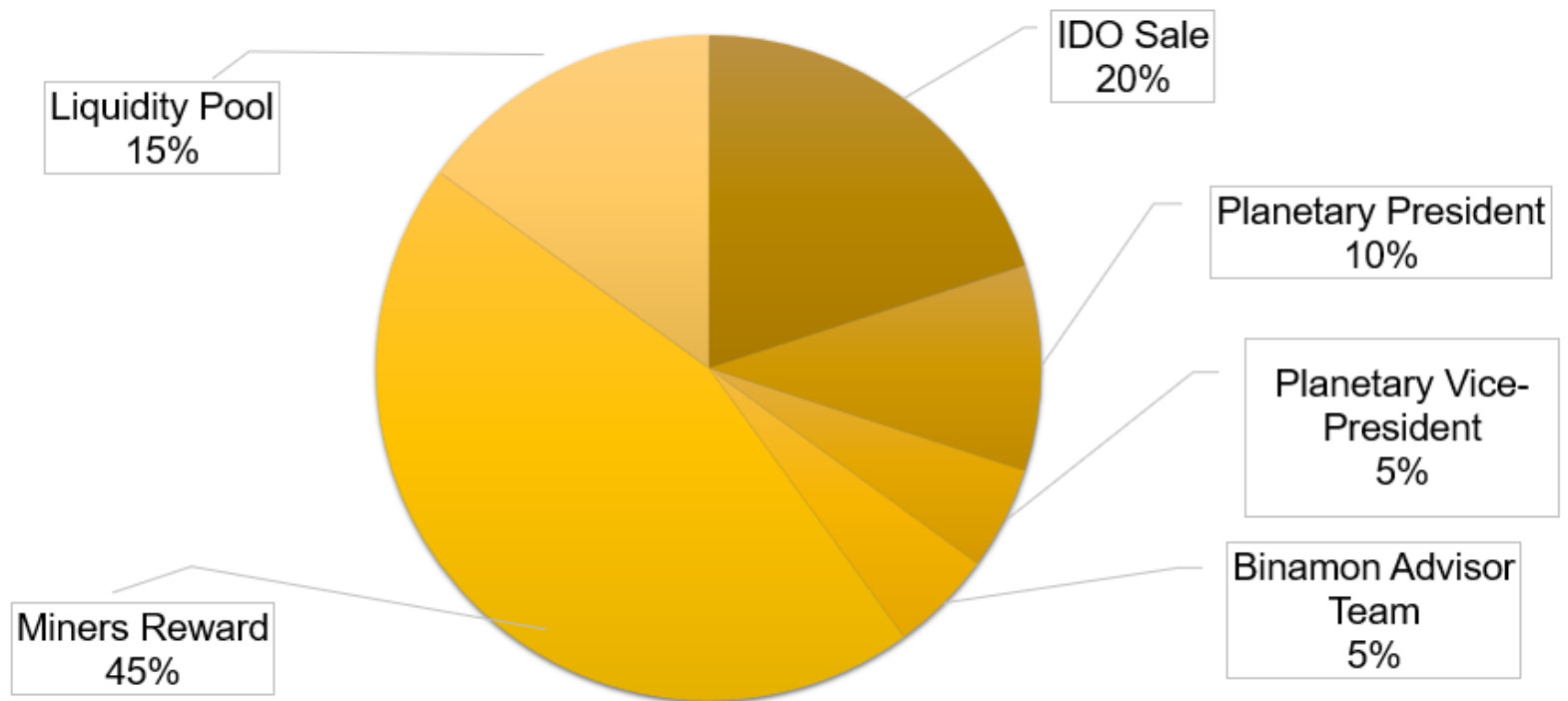
We create a fair world of work.

The President and Vice President will receive income as taxes for their planet; but they will have to make the right decisions, because otherwise the miners will not want to work for them.

The Binamon Planetary Federation will provide all the technology, support, strategic marketing, press publications, advertising campaigns, infrastructure; all turnkey.



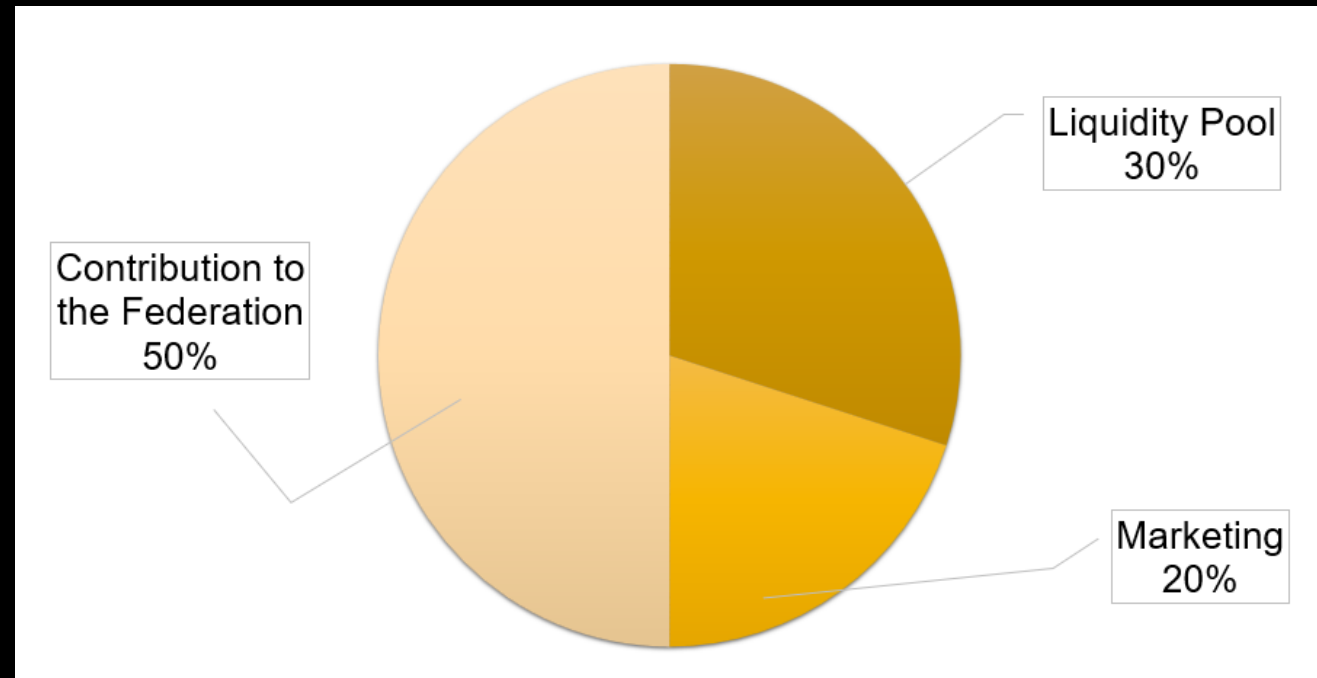
TOKENOMICS





USE OF FUNDS

The collection will be made at BMON. There will be no maximum of what can be raised in BMON, since we cannot limit the growth of the planet. We estimate that between 2M and 10M will be raised from BMON. Funds will be earmarked for the Z1-BEP / BMON LP. Also for marketing. 50% of the proceeds will be contributed to the Federation, to continue developing and innovating, and to pay the fixed costs of infrastructure, staff and servers.





RECAP

With the discovery of the planet A-LGC-Z1 (remember that the name will be changed by the ELITE), we estimate to contribute some new 400,000 NFT Monsters to the Binamon Metaverse.

400,000 new workers will join the Binamon Planetary Federation. In this way we will have a total of 750,000 miners in the Federation.

Although the path to 10,000,000 miners has only just begun.



BINAMON

PLANET A-LGC-Z1

**HOW ARE YOU GOING TO
EARN YOUR MILLIONS?**